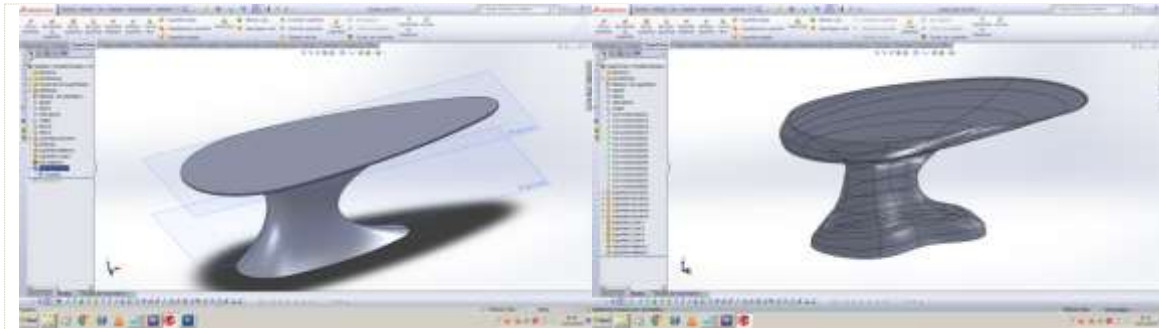
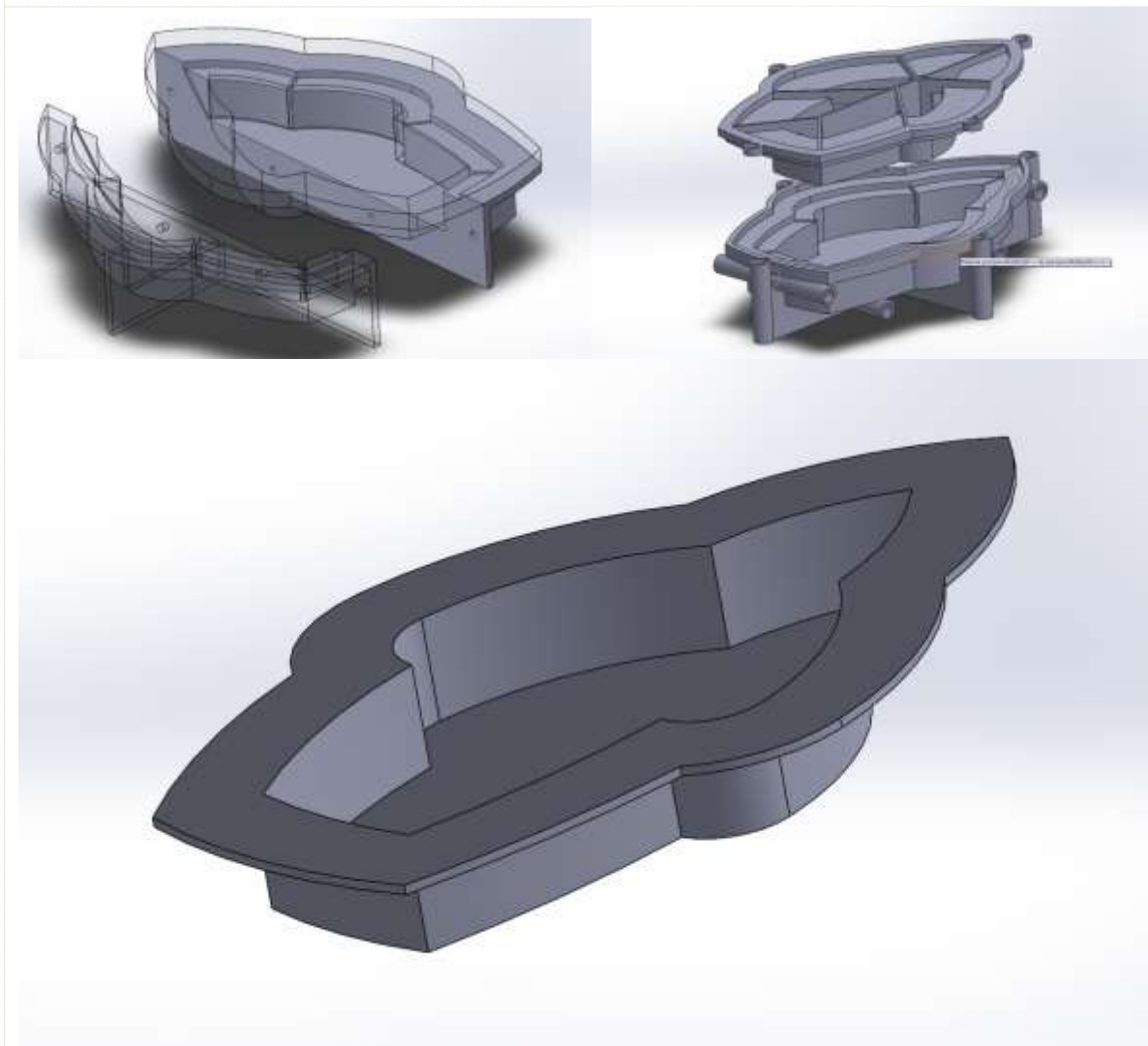


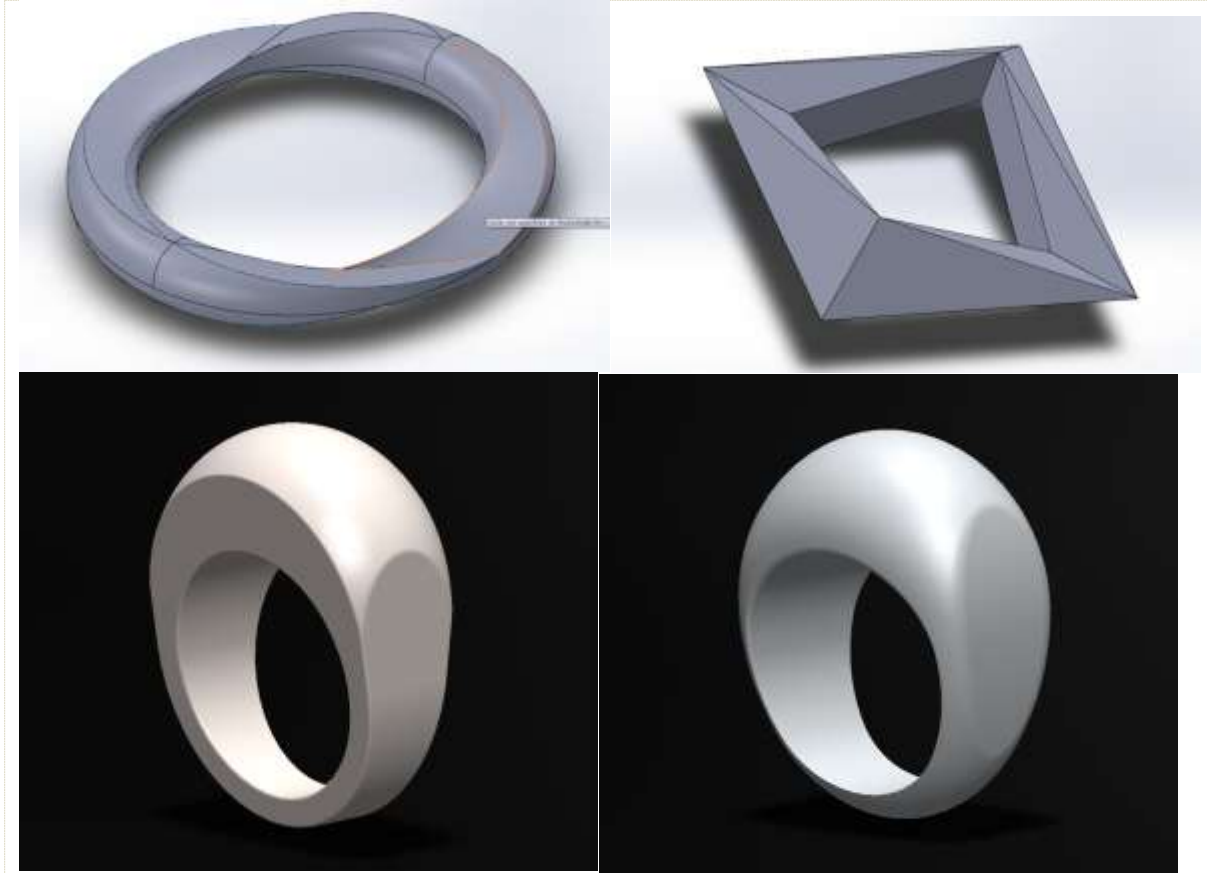
Description



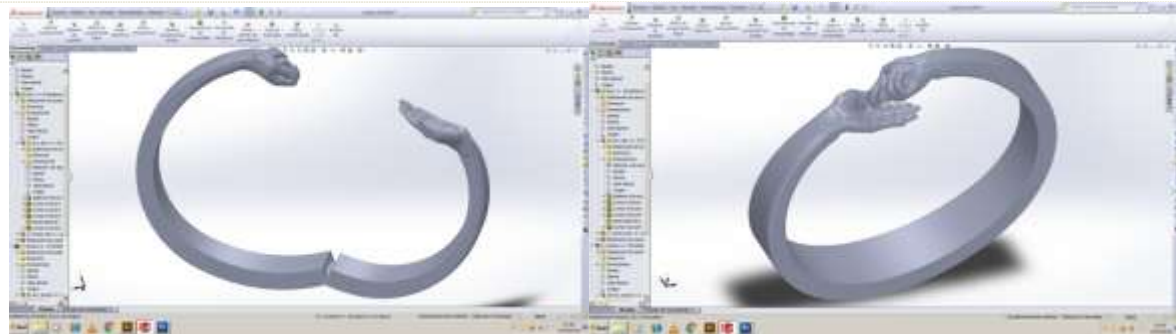
2015 - Modeling tables from a small clay model, the second working it from scanned forms and then modeling on them to normalize (creating isoparametrics that smooth the scanned surfaces) and create forms that can be easily sent to printing machines and prototyping.



2015 - This is the mold (fig. 1, 2) ready to 3d print and after we can get silicone cast (fig 3) that can be used as molds to cook cakes



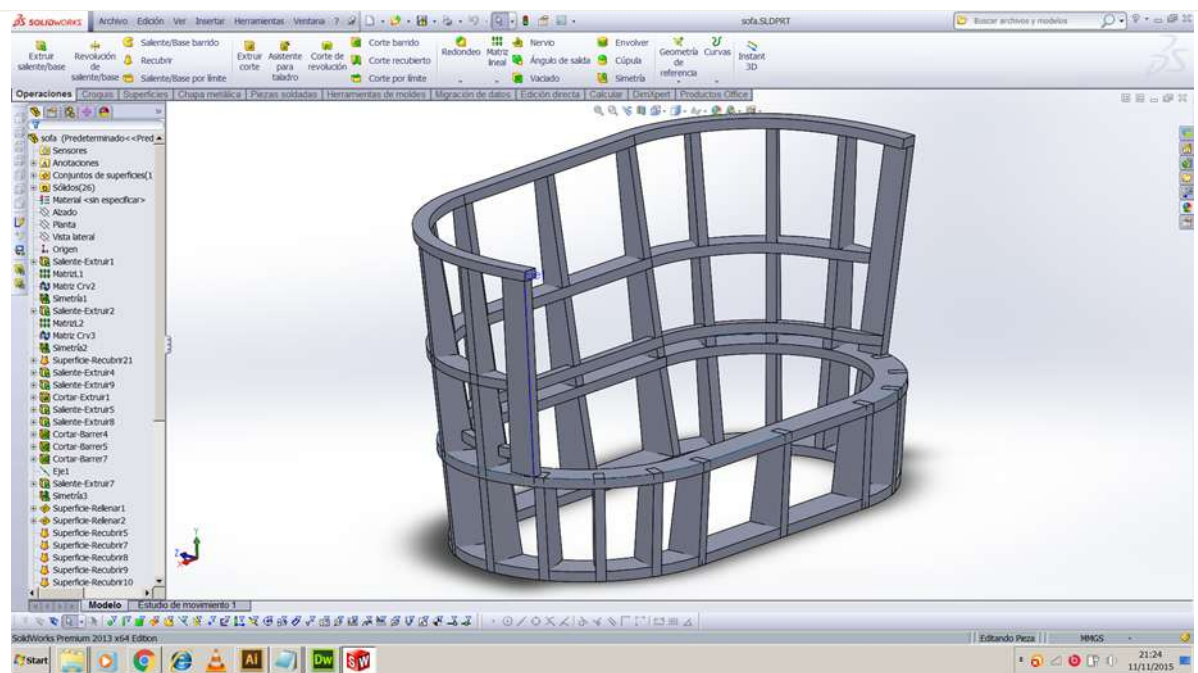
Different ideas for rings, rims or frames made by 3d software: Solidworks, 3dStudio, Rhinoceros.



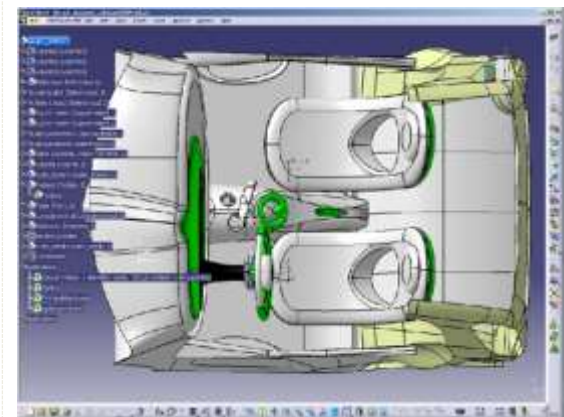
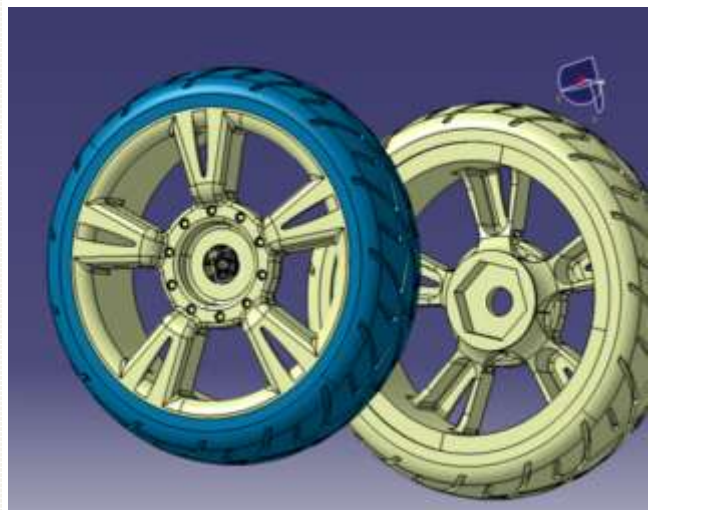
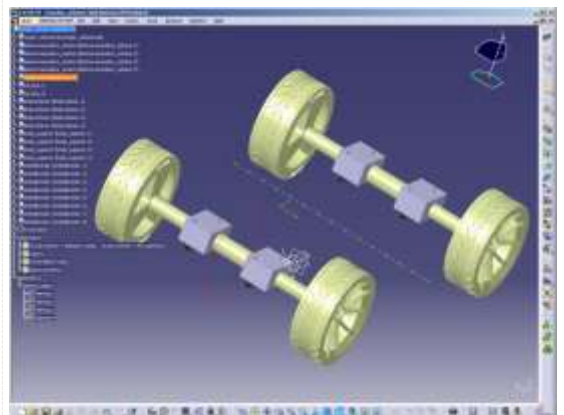
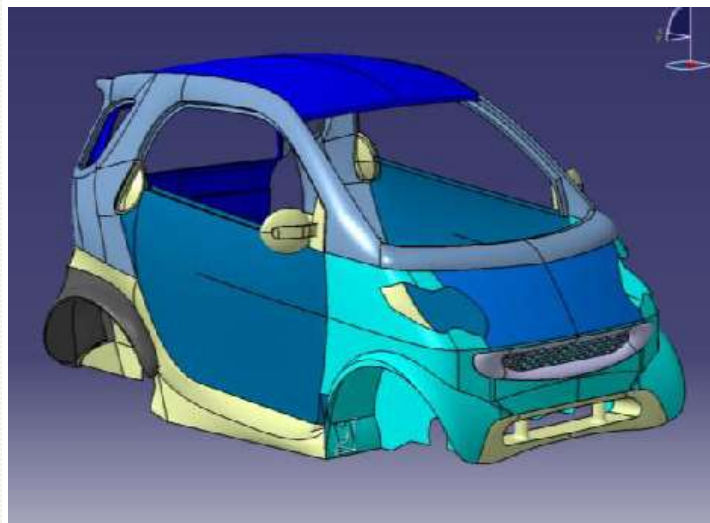
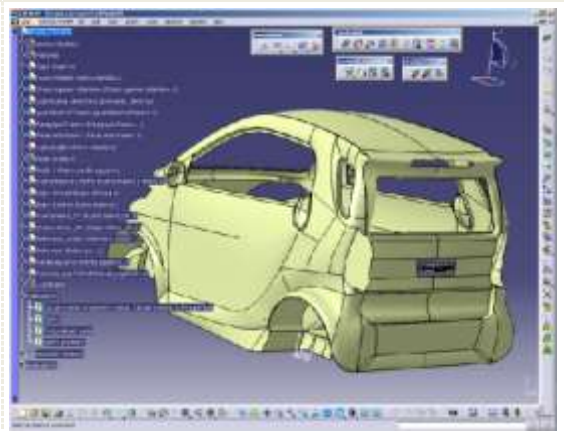
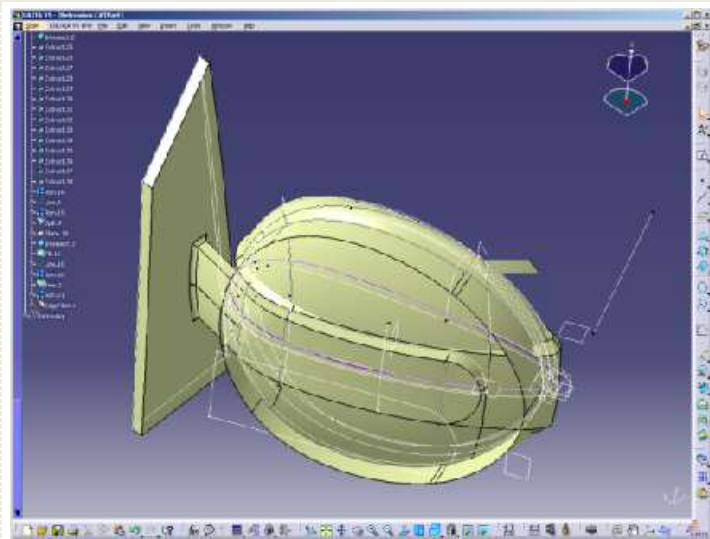
2014 - These are some bracelets that was looking at the manufacturing system, because as you wanted them to be of metal, aluminum or silver, whether by mechanization (erosion of iron), whether through prototyping wax ... getting in touch with different manufacturing suppliers.



10/13/2014 These are blueprints for the production of stainless steel base for a sculptures. These plans serve to make the cut by CNC as for subsequent assembly.

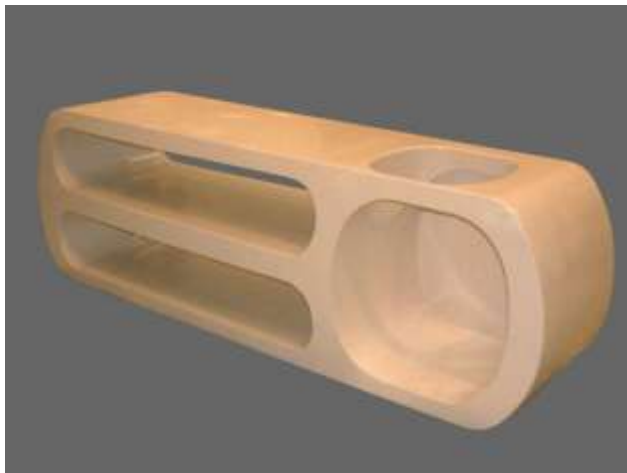


2013 This is the assembly file with all the parts made in SolidWorks and so can make different changes in measures in its components to get different sofas structures.





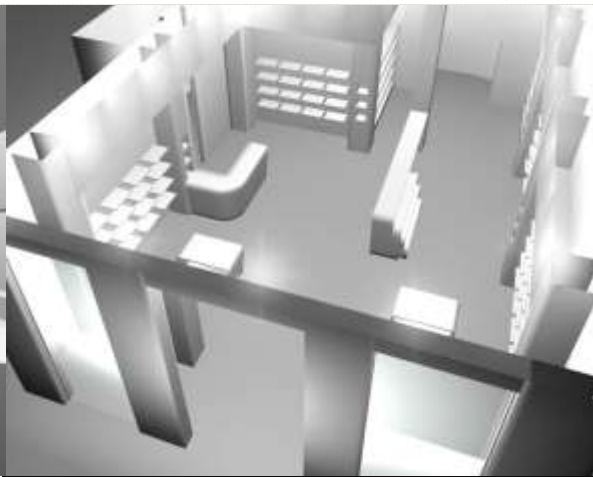
2010 Work project made in a course: Technical in Prototips in [Fundacio CIM](#), UPC (Politechnic University of Catalonia, Barcelona), it consists in rebuild a car "smart" through 3d software as Catia and Solidworks and fabricate through 3d printers and different kind of molds

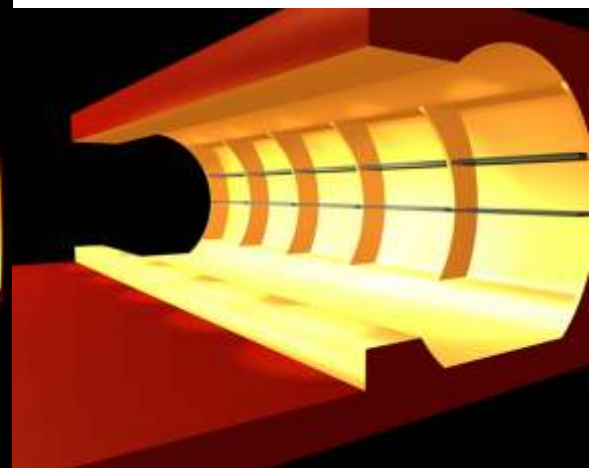
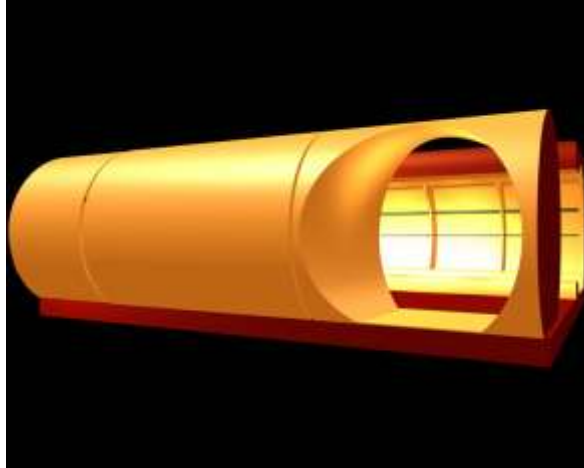
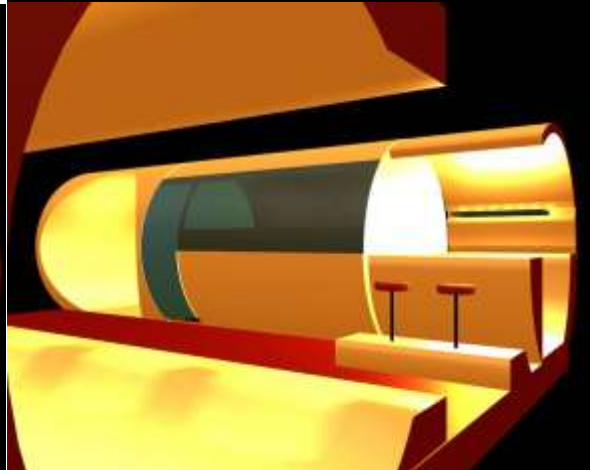
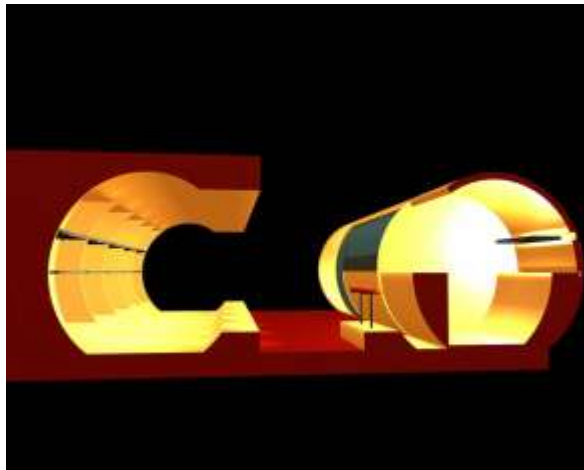
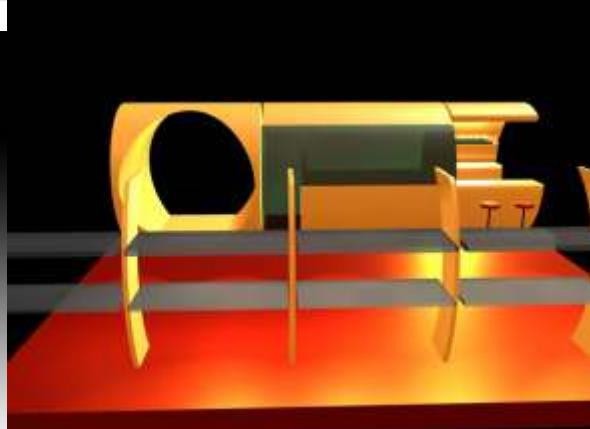
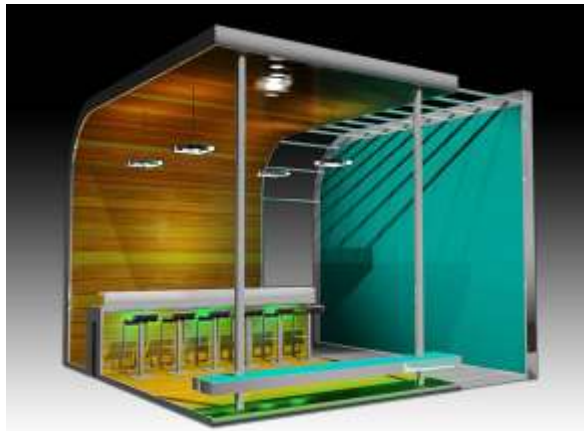


2007 Kitchen furniture made in fiberglass like decoration and exhibition element for Caramelo shops. Designed by [Pure Sang](#), Barcelona



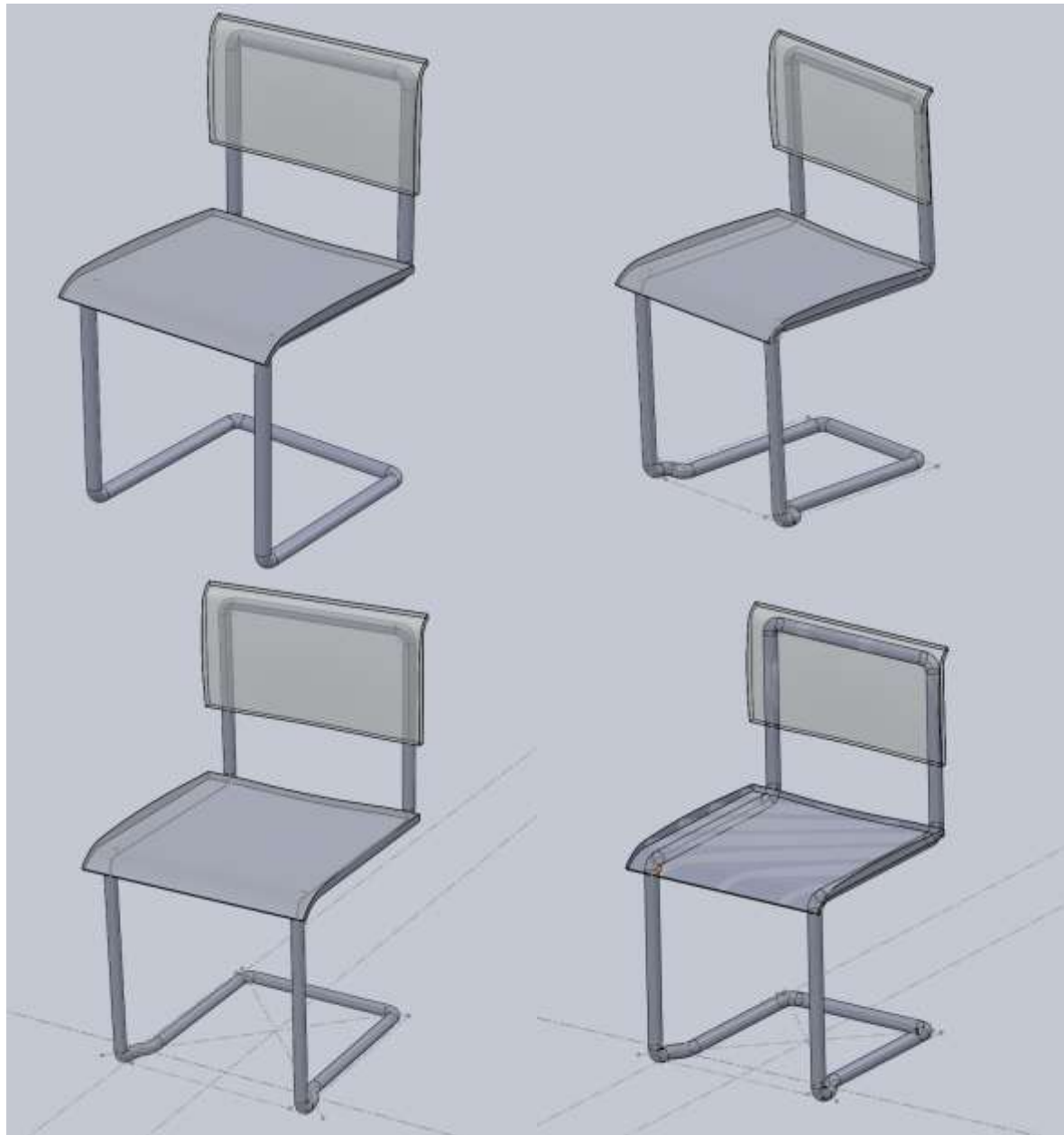
It is a 3d representation of a real house, typical and old, situated in a town in Spain with modifications and actuations in order to refurbish the house

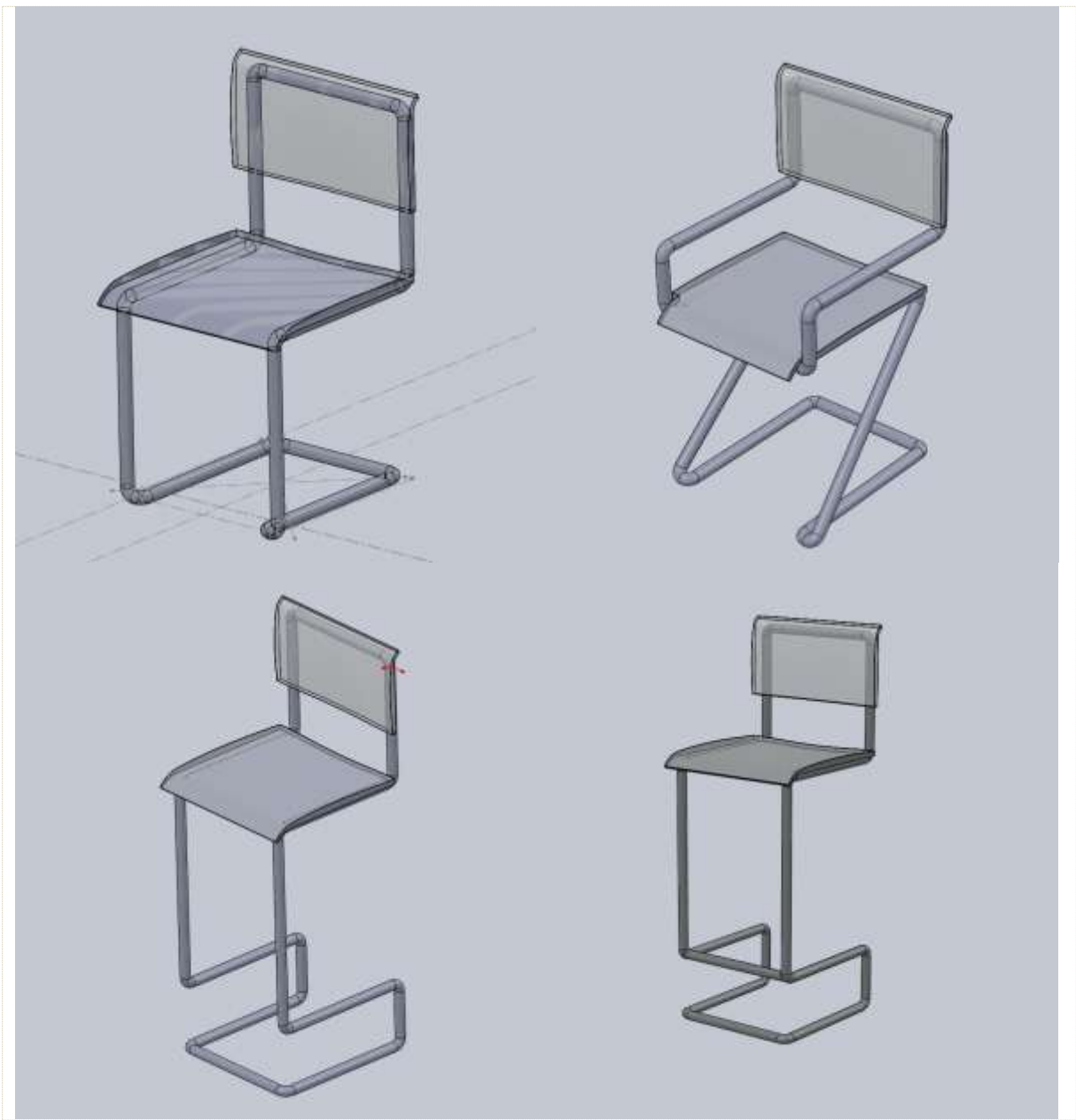


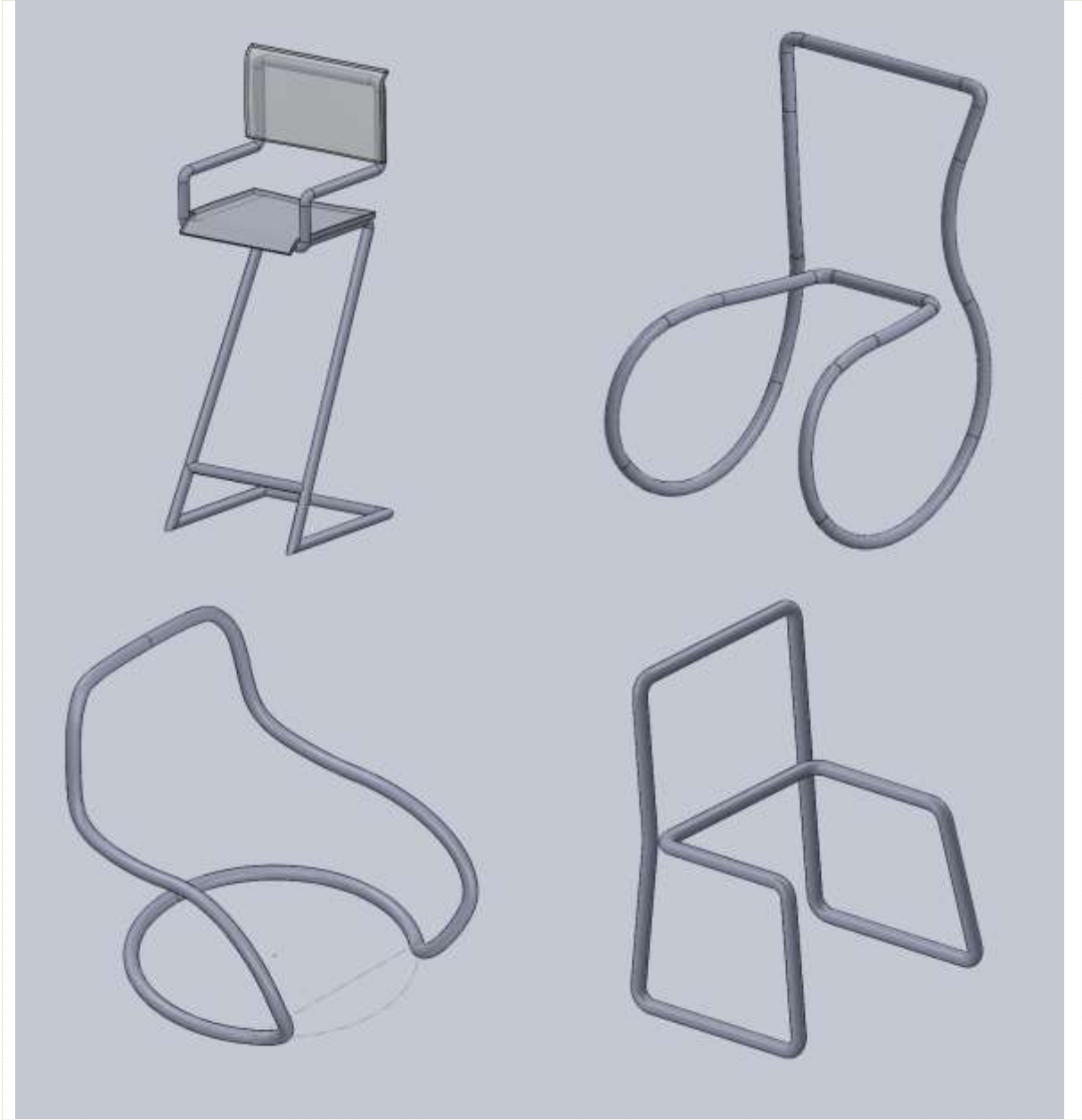


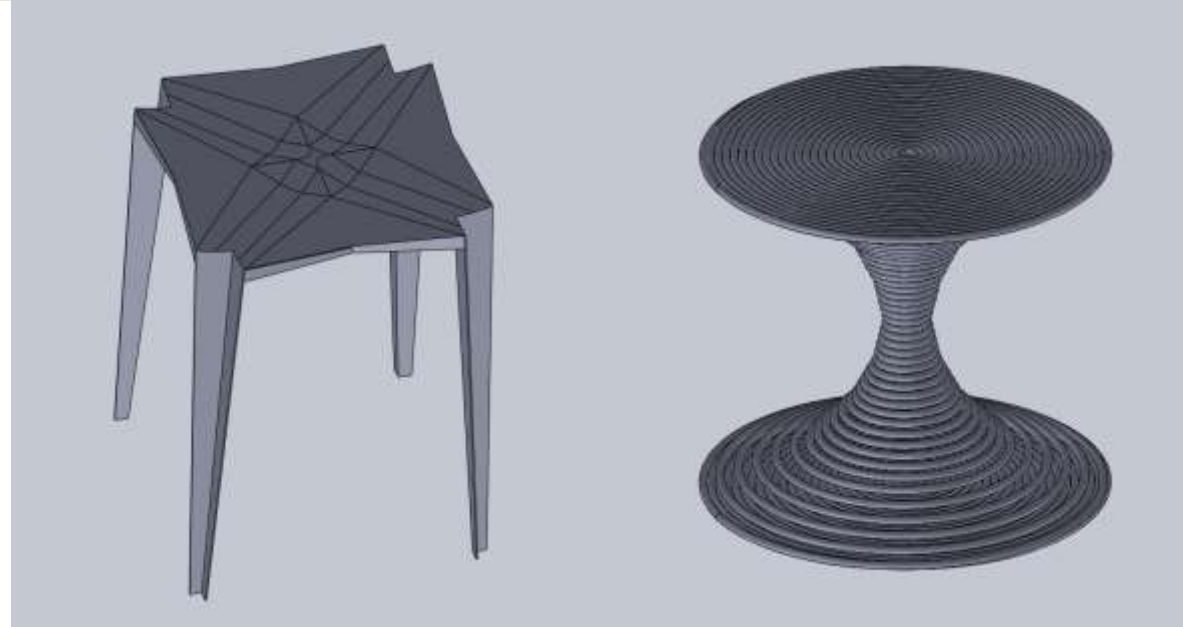
2006 - Different 3d models for recreation changes in shops (fig. 1, 2 here I recreate the fitting-room), design shops and manage the exhibition spaces, shelves, counters,..(fig. 3 to 6) and to represent stands (fig. 7 to 12)

A collection of chairs, stools and rocking chairs designed to be accomplished with continuous curved tube. Seat and back can be of solid material as shown in the first chairs but also with fabrics or leather.

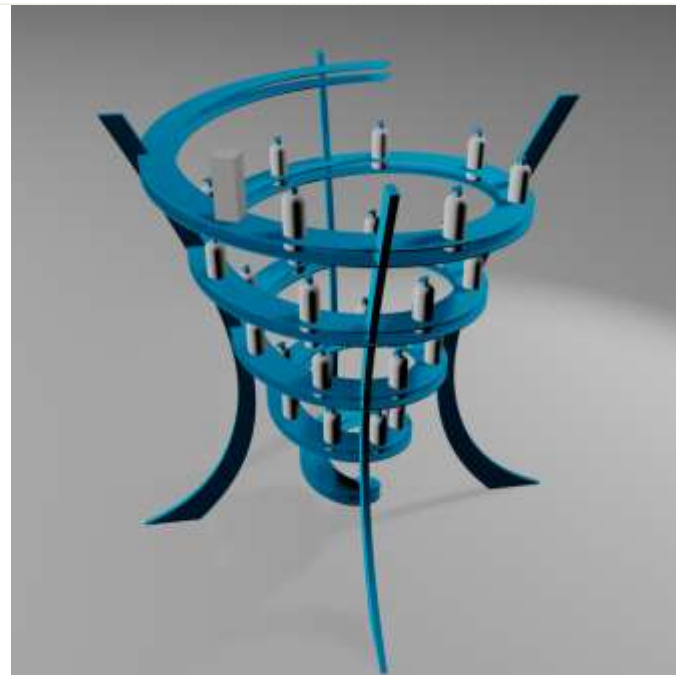








A collection of chairs, stools and rocking chairs designed to be accomplished with continuous curved tube. Seat and back can be of solid material as shown in the first chairs but also with fabrics or leather.



Design of display to be made in cardboard died, it is a stretched spiral fixed in the columns made also in the same cardboard.